



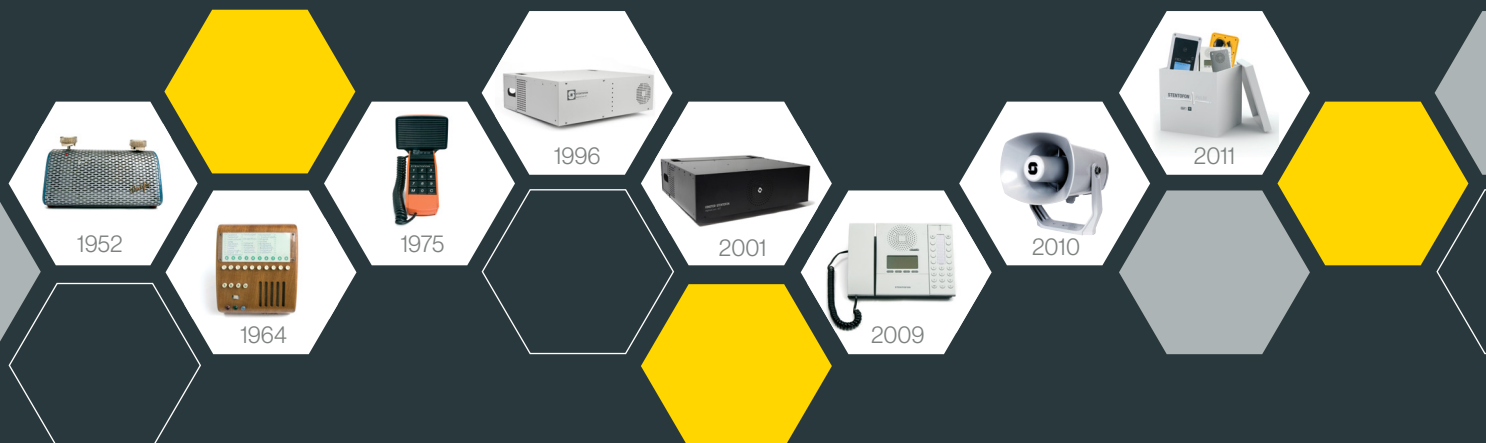
A single product range running on 3 different platforms

- ICX-AlphaCom
- SIP
- IC-EDGE

Onshore, Safety & Security
PRODUCT CATALOG 2023

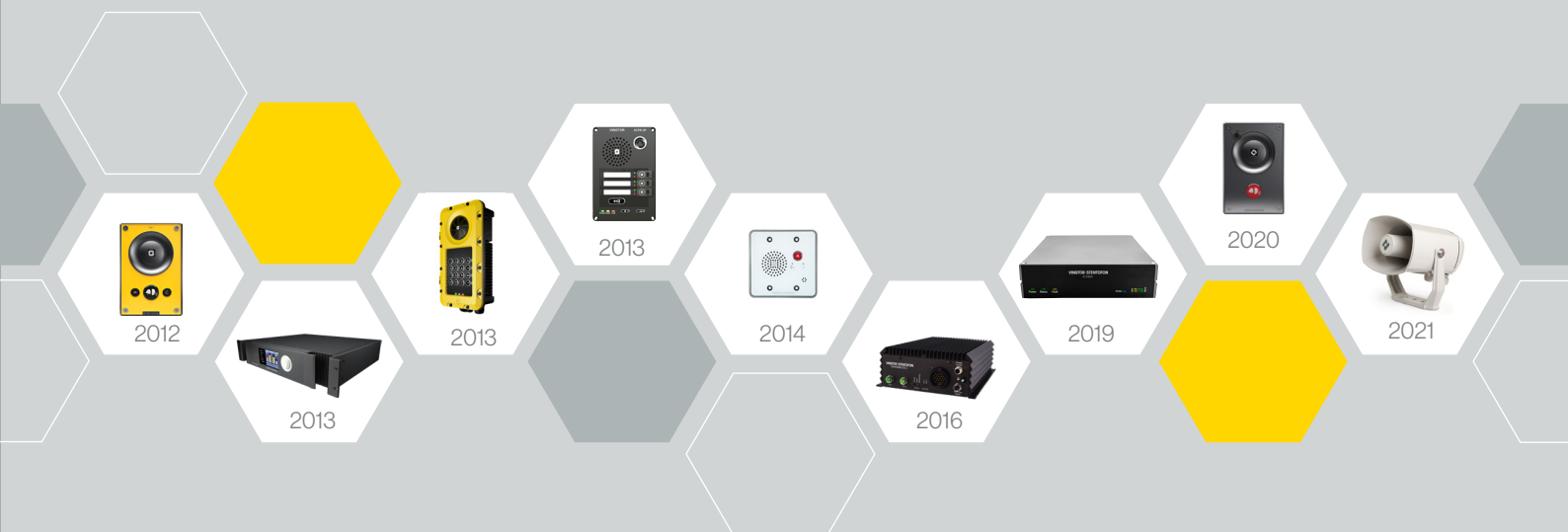


Zenitel products are developed by the Zenitel Group and comprise a range of high-quality communications equipment and systems. In business since 1901, Zenitel's products are recognized worldwide for offering high-quality communications for both offshore and onshore installations. Primary system offerings in the Zenitel product portfolio are Public Address and Intercom. Zenitel and the company's global partner network also integrate these systems with other security devices such as Radio, CCTV, Access Control and Alarm, for a comprehensive security solution.





Single Product Range – 3 Different Platforms	4
ICX-AlphaCom System	6
IC-EDGE System	6
SIP System	7
Turbine IP Intercom Stations	8
Turbine IP Video Stations	11
IP Intercom Stations	12
Turbine Industrial/Ex IP Stations	15
Heavy Duty IP Stations	17
IP Station Kits	18
IP Speakers with Microphones	19
ASL Public Address and Voice Alarm solutions by Zenitel	20
ICX-AlphaCom Platform	22
ICX-AlphaCom Application Software	24
Flowire Converter	26
Licenses	27





One single product range

3 different platforms

Invest in a product that keeps pace with changing technology, and that both anticipates and secures your future communication needs. Our equipment and devices can be used on 3 different platforms that each caters to a specific set of communication requirements.

ICX-AlphaCom

ICX-AlphaCom is all about integration. All communication devices (radio, telephone, PA, intercom, etc.) come together on the ICX-AlphaCom platform to be integrated with the overall Building Management System. This allows the use of powerful tools such as voice and audio in maintaining building security.

IC-EDGE

IC-EDGE is a self-contained communication platform that's embedded in the actual IP Intercom and IP PA devices. No external server hardware is required and configuration is easily done using a web browser. Easy to deploy, use and maintain. Ideal for SMB companies.

SIP

Our devices also support the **SIP protocol**. This means that they can be used on any VoIP communication platform that supports SIP. We understand that some customers prefer to keep the number of servers and other hardware to a minimum. Using SIP, you're able to hear, be heard and understood, when and where you need to, every time – all while using your existing VoIP system.



At commissioning, the IP station needs to be configured to enable it to be used as:

- ICX-AlphaCom extension
- IC-EDGE extension
- SIP extension

ICX-AlphaCom System

Our Intelligent Communication Platform provides management and security services and allows for seamless integration into the cloud and other applications.



The core of the system is the ICX-500 Intelligent Communication Gateway connecting people, devices & systems at unrivalled levels of manageability, scalability, robustness and interoperability.

ICX-AlphaCom Offers:

Integrated Intelligent Communication Management & Security

Streamlined and unified management
Built-in Cybersecurity – Trusted Platform

Scalability & Robustness

State-of-the-art quad-core processing capacity
Supports up to 552 IP devices per node
Solid design with no moving parts

Interoperability

Supports industry standards like SIP and HTTP
Multiple certified platform and device integrations
Native API & cloud connectivity
Fully compatible with legacy AlphaCom system

IC-EDGE System

IC-EDGE is the next-generation intelligent communication system that delivers seamless integration, unrivalled sound quality, security and ease of use right out of the box. Minimize your hardware infrastructure, maximize audio quality and performance, and consolidate your communication needs into a centralized system requiring no external server.

System Description

Allows up to:

- 64 stations per system
- 10 VS-clients (PC)
- 10 SIP-clients (e.g., VoIP App)

Embedded server, no additional server equipment required

Mobile app

Automatic discovery of all Zenitel devices

Fast and easy system setup using web browser

Stations support Active Noise Reduction

Audio Messaging

Group Call with Re-Call and Answer Function

IC-EDGE mode is available on all our IP Stations

Wide range of special purpose intercom stations

Open for SIP-enabled 3rd-party devices



SIP Trunking to ISDN/GSM telephony gateways

IP Telephony Service

G711, G722 codec support

Configurable Door Relay

Network up to 50 IC-EDGE systems





SIP System

Setting the Standard for Open and Transparent technology.

SIP is the quintessential example of an open and transparent technology that unifies voice communication. This protocol is integrated and available out-of-the-box, on every single IP Device in our portfolio.

Our SIP products work anywhere in any iPBX system, are certified for integration in Avaya, Cisco, NEC and Alcatel-Lucent systems, and have been used on these platforms for many years. In addition, our products are currently being used successfully on other platforms such as Samsung, Mitel, Asterisk, and Panasonic.

Our devices support G.711 (μ -law and A-law), G.722 and G.729.

 <p>The Zenitel SIP Intercom solution has successfully passed compliance testing with Avaya IP Office and is officially recognized as compliant.</p>	 <p>The Zenitel SIP Intercom solution has been compliance tested with Cisco Unified Communications Manager.</p>	 <p>The Zenitel SIP Intercom solution is compatible with the following NEC platforms: All NEC IP PBX Family 3C : Softswitch SV8300 : IP PBX iS3000 : Hybrid PBX.</p>	 <p>A selection of stations are compatible with Alcatel-Lucent OmniPCX Enterprise R10.</p>
---	--	--	---

...and more

NETWORK SECURITY

Our years of experience from working with large iPBX brands such as Cisco, Avaya and Alcatel have taught us the importance of hardening our devices against network attacks. We work tirelessly to implement and upgrade security protocols to keep our devices up to date with the latest security standards.

KEEPING YOUR SYSTEM RUNNING

Our IP stations support a range of features to make it easier to upgrade and maintain firmware. We support open protocols such as SNMP, TFTP and RSTP. In addition, we offer various SIP registration methods to enable redundancy (Parallel, Serial, Top-Down and Cisco's SRST protocol). Our products are highly reliable, with an expected MTBF of 400K hours.



Turbine IP Stations

All Turbine Stations work with ICX-AlphaCom, SIP, IC-EDGE



1008111010

TCIS-1

- Amazing sound pressure level when needed
- Background noise cancellation
- Dirt, dust and water resistant - IP66 rating
- Built to last with robust die-cast aluminium frame - IK 08 rating
- Designed according to the norm for hearing impaired
- Support wide set of IP and networking standards
- ONVIF Compatible
- Yellow thermoplastic front plate with one button + M and C
- Ideal for Industrial Applications



Size (WxHxD): 120 x 180 x 70mm Wt: 0.8kg

Accessories: 1008140010 TA-1 Turbine Compact On Wall Box, 1008140140 TA-14 Microphone Windscreen, 2390020100 Touchless Sensor

1008111020

TCIS-2

- Amazing sound pressure level when needed
- Background noise cancellation
- Dirt, dust and water resistant - IP66 rating
- Built to last with robust die-cast aluminium frame - IK10 rating
- Designed according to the norm for hearing impaired
- Support wide set of IP and networking standards
- ONVIF Compatible
- Stainless steel front plate with one button
- Ideal for Building Security and Public Environments



Size (WxHxD): 120 x 180 x 70mm Wt: 0.8kg

Accessories: 1008140010 TA-1 Turbine Compact On Wall Box, 1008140140 TA-14 Microphone Windscreen, 2390020100 Touchless Sensor

1008111030

TCIS-3

- Amazing sound pressure level when needed
- Background noise cancellation
- Dirt, dust and water resistant - IP66 rating
- Built to last with robust die-cast aluminium frame - IK08 rating
- Designed according to the norm for hearing impaired
- Support wide set of IP and networking standards
- ONVIF Compatible
- Black thermoplastic front plate with one button
- Ideal for Building Security and Public Environments



Size (WxHxD): 120 x 180 x 70mm Wt: 0.8kg

Accessories: 1008140010 TA-1 Turbine Compact On Wall Box, 1008140140 TA-14 Microphone Windscreen, 2390020100 Touchless Sensor

1008111040

TCIS-4

- Amazing sound pressure level when needed
- Background noise cancellation
- Dirt, dust and water resistant - IP66 rating
- Built to last with robust die-cast aluminium frame - IK08 rating
- Designed according to the norm for hearing impaired
- Support wide set of IP and networking standards
- ONVIF Compatible
- Black thermoplastic front plate with one labelled button
- Unique labelling solution with PMOLED display
- Ideal for Building Security and Public Environments



Size (WxHxD): 120 x 180 x 70mm Wt: 0.8kg

Accessories: 1008140010 TA-1 Turbine Compact On Wall Box, 1008140140 TA-14 Microphone Windscreen, 2390020100 Touchless Sensor

1008111050

TCIS-5

- Amazing sound pressure level when needed
- Background noise cancellation
- Dirt, dust and water resistant - IP66 rating
- Built to last with robust die-cast aluminium frame - IK08 rating
- Designed according to the norm for hearing impaired
- Support wide set of IP and networking standards
- ONVIF Compatible
- Black thermoplastic front plate with two labelled buttons
- Unique labelling solution with PMOLED display
- Ideal for Building Security and Public Environments



Size (WxHxD): 120 x 180 x 70mm Wt: 0.8kg

Accessories: 1008140010 TA-1 Turbine Compact On Wall Box, 1008140140 TA-14 Microphone Windscreen, 2390020100 Touchless Sensor

1008111060

TCIS-6

- Amazing sound pressure level when needed
- Background noise cancellation
- Dirt, dust and water resistant - IP66 rating
- Built to last with robust die-cast aluminium frame - IK08 rating
- Designed according to the norm for hearing impaired
- Support wide set of IP and networking standards
- ONVIF Compatible
- Black thermoplastic front plate with scrolling unit for calling to an unlimited number of places
- PMOLED display
- Ideal for Building Security and Public Environments



Size (WxHxD): 120 x 180 x 70mm Wt: 0.8kg

Accessories: 1008140010 TA-1 Turbine Compact On Wall Box, 1008140140 TA-14 Microphone Windscreen, 2390020100 Touchless Sensor

1008111901

TCIS-C1

- Designed according to Disability Act requirements
- Audio Presence - crystal clear audio
- Amazing sound pressure levels when needed with automatic volume adjustment
- Background noise cancellation
- Dirt, dust and water resistant - rating IP-65
- Built to last with robust die-cast aluminium frame - rating IK 08
- Supports wide set of IP and networking standards
- ONVIF Compatible
- Custom front plate with two labelled buttons
- Ideal as Help Point in Public Environments



Size (WxHxD): 120 x 180 x 70 mm Wt: 0.8 kg

Accessories: 1008140010 TA-1 Turbine Compact On Wall Box, 1008140140 TA-14 Microphone Windscreen, 2390020100 Touchless Sensor

1008113020 / 1008113120

TCIA-2 Analog over IP Intercom

- Vandal resistant Analog over IP intercom
- Up to 60 meters extended analog interface keeps the IP network port in protected area
- Stainless steel front plate with one button
- Used together with TKIA-2 and TKIS-2
- 1008113120 TCIA-2-P is a package comprising TCIA-2, TKIA-2, TKIS-2



Size (WxHxD): 120 x 180 x 73 mm Wt: 1 kg

1008116010

TMIS-1 Turbine Mini

- Background Noise Cancellation
- Built to last with robust die-cast aluminium frame
- Supports wide set of IP and networking standards
- ONVIF Compatible
- White thermoplastic front plate with 1 button
- Ideal for Building Security & Public Environments
- IP Rating: IP42



Size (WxHxD): 117 x 117 x 41 mm Wt: 0.3 kg

1008116020

TMIS-2 Turbine Mini

- Background Noise Cancellation
- Vandal Resistant Design
- 11 Gauge Stainless Steel Faceplate
- One Vandal Proof Call Button
- ONVIF Compatible
- Superb Audio Quality using G.722 Audio Codec
- Class D 10 W Amplifier



Size (WxHxD): 114 x 114 x 55 mm Wt: 0.5 kg

1008116040

TMIS-4 Turbine Mini

- Background Noise Cancellation
- Built to last with robust die-cast aluminium frame
- Supports wide set of IP and networking standards
- ONVIF Compatible
- White thermoplastic front plate with 2 buttons
- Ideal for Building Security & Public Environments
- IP Rating: IP42



Size (WxHxD): 117 x 117 x 41 mm Wt: 0.3 kg

2390020100

Touchless Sensor

- Accessory for Turbine compact series TCIS/TCIV+
- Contactless communication for a variety of settings and applications
- Activates intercom calls using gesture recognition with simple swipe of the hand



Size (WxHxD): 80 x 80 x 28 mm Wt: 0.2 kg

1008133020

TKIA-2 Analog over IP Gateway

- Extends analog interface on TKIS-2 up to 60 m
- Keeps your IP network port in protected area.
- Uses a standard CAT5 or CAT6 Ethernet cable to connect to TCIA-2 Analog over IP intercom.
- Includes cable for connection to TKIS-2
- Used together with TKIS-2 and TCIA-2



Size (WxHxD): 117 x 71 x 32 mm Wt: 0.1 kg

1023200033

ECPIR-3P

- Indoor intercom for console mounting
- Communication and Power over Ethernet
- ONVIF Compatible
- Three programmable buttons
- Separate PTT button
- Indicators for power, call and fault
- Can be used with handheld or gooseneck mic
- Background Noise Cancellation
- IP Rating: IP32



Size (WxHxD): 96 x 144 x 50 mm Weight: 0.5 kg

Accessories: 3005020033 MB-30G Gooseneck Mic, 1023533012 PAM1H Handheld Mic

1008140140

TA-14 Mic Windscreen for TCIX

- Protects Turbine Compact microphone against wind noise



Size (WxHxD): 110 x 12.4 x 15.5 mm

1023253008

EBMDR-8

- Button expansion module for ECPIR-3P intercom
- Powered from ECPIR-3P
- Eight programmable buttons with individual labels and status indicators
- Optional button protection covers
- Four units can be connected to one intercom



Size (WxHxD): 96 x 144 x 50 mm Weight: 0.5 kg

1023533012

PAM1H Handheld Mic for ECPIR-3P

- Handheld PA microphone with bracket
- Push-To-Talk button
- Electret and Noise Cancelling microphone
- IP-66



Size: Length 142 mm, Head Ø 29 mm, Body Ø 24 mm

Weight: 0.19 kg Cord Length: 1.5 m

3005020033

MB-30G Gooseneck Mic for ECPIR-3P

- Electret Microphone - 2K ohm
- 5-pin DIN plug

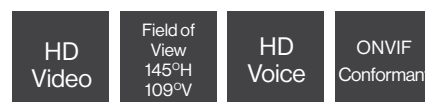


Size (WxL): 36 x 446 mm Weight: 0.1 kg

Turbine Video Stations



The Turbine Video Intercom solution offers unrivaled audio and HD video. Empower your security team with the proven audio quality of Turbine in order to act in real time and with clear communication. Through a unique combination of exceptional video, voice and powerful audio amplification for announcements, you can mitigate security risks faster than ever before.



1008117010

TMIV-1+ Turbine Mini Video

- HD video up to 1080p resolution
- Wide angle lens
- ONVIF Conformant
- Supports wide set of IP and networking standards
- White thermoplastic front plate with 1 button
- IP Rating: IP44



Size (WxHxD): 117 x 117 x 41 mm Wt: 0.3 kg

1008315020

TCIV-2+

- Powerful audio technology including high sound pressure, automatic volume gain control, and active noise echo cancelling
- HD video up to 1080p resolution
- Wide angle lens
- High performance hardware platform with 4 x Cortex-A53 CPU cores and 512MB LPDDR4 RAM
- Vandal Resistant Design
- IP66 - Dirt, dust and water resistant
- Cybersecurity compliant
- Operates in SIP, IC-EDGE, ICX-AlphaCom modes
- Stainless steel front plate with one button
- ONVIF Conformant



Size (WxHxD): 120 x 180 x 73 mm Wt: 1 kg

Accessories: 1008140010 TA-1 Turbine Compact On Wall Box, 1008140140 TA-14 Microphone Windscreen, 2390020100 Touchless Sensor

1008315030

TCIV-3+

- Powerful audio technology including high sound pressure, automatic volume gain control, and active noise echo cancelling
- HD video up to 1080p resolution
- Wide angle lens
- High performance hardware platform with 4 x Cortex-A53 CPU cores and 512MB LPDDR4 RAM
- Vandal Resistant Design
- IP66 - Dirt, dust and water resistant
- Cybersecurity compliant
- Operates in SIP, IC-EDGE, ICX-AlphaCom modes
- Black thermoplastic front plate with one button
- ONVIF Conformant



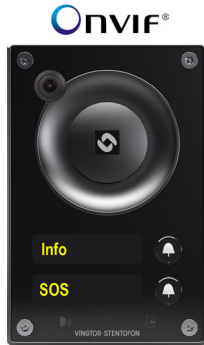
Size (WxHxD): 120 x 180 x 73 mm Wt: 1 kg

Accessories: 1008140010 TA-1 Turbine Compact On Wall Box, 1008140140 TA-14 Microphone Windscreen, 2390020100 Touchless Sensor

1008315050

TCIV-5+

- Powerful audio technology including high sound pressure, automatic volume gain control, and active noise echo cancelling
- HD video up to 1080p resolution
- Wide angle lens
- High performance hardware platform with 4 x Cortex-A53 CPU cores and 512MB LPDDR4 RAM
- Vandal Resistant Design
- IP66 - Dirt, dust and water resistant
- Cybersecurity compliant
- Operates in SIP, IC-EDGE, ICX-AlphaCom modes
- Black thermoplastic front plate with two buttons
- Labelling solution with PMOLED displays
- ONVIF Conformant



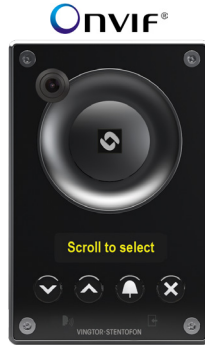
Size (WxHxD): 120 x 180 x 73 mm Wt: 1 kg

Accessories: 1008140010 TA-1 Turbine Compact On Wall Box, 1008140140 TA-14 Microphone Windscreen, 2390020100 Touchless Sensor

1008315060

TCIV-6+

- Powerful audio technology including high sound pressure, automatic volume gain control, and active noise echo cancelling
- HD video up to 1080p resolution
- Wide angle lens
- High performance hardware platform with 4 x Cortex-A53 CPU cores and 512MB LPDDR4 RAM
- Vandal Resistant Design
- IP66 - Dirt, dust and water resistant
- Cybersecurity compliant
- Operates in SIP, IC-EDGE, ICX-AlphaCom modes
- Black thermoplastic front plate with scrolling PMOLED display
- ONVIF Conformant



Size (WxHxD): 120 x 180 x 73 mm Wt: 1 kg

Accessories: 1008140010 TA-1 Turbine Compact On Wall Box, 1008140140 TA-14 Microphone Windscreen, 2390020100 Touchless Sensor

IP Intercom Stations

All IP Stations work with ICX-AlphaCom, SIP, IC-EDGE



1490004010

ITSV-4 HD IP Video Phone

- 16 lines with up to 16 SIP accounts
- 4-core 1.8GHz ARM Cortex A55 processor with 2GB RAM and 16GB eMMC Flash
- Runs on Android 11 operating system
- 5.0" (1280x720) capacitive 5-point touch screen HD TFT LCD
- Built-in Bluetooth 5.0 for syncing with mobile devices and connecting Bluetooth headsets and connecting Bluetooth headsets
- Integrated dualband WiFi (2.4GHz & 5GHz)
- Built-in PoE/PoE+ for power and network connection
- Built-in 2 mega-pixel CMOS tiltable camera with privacy shutter, 720p 30fps
- 10-way audio conferencing and 3-way video conferencing capability
- Dual-mic HD speakerphone with noise reduction, advanced echo cancellation, and excellent double-talk performance
- Dual-switched auto-sensing 10/100/1000Mbps network ports



Size (WxHxD): 243 x 82 x 210 mm Wt: 1 kg

1490005010

ITSV-5 HD IP Video Phone

- 16 lines with up to 16 SIP accounts
- 4-core 2.0GHz ARM Cortex A55 processor with 4GB RAM and 16GB eMMC Flash
- Runs on Android 11 operating system
- 8" (1200x800) capacitive 10-point touch screen HD IPS LCD
- Built-in Bluetooth 5.0 for syncing with mobile devices and connecting Bluetooth headsets
- Integrated dual-band WiFi 6 (2.4GHz and 5GHz)
- Built-in PoE/PoE+ to power the device and give it a network connection
- Built-in 2 mega-pixel CMOS tiltable camera with privacy shutter, 1080p 30fps
- 12-way audio conferencing and 3-way video conferencing capability
- Dual-mic HD speakerphone with noise reduction, advanced echo cancellation, and excellent double-talk performance
- Dual-switched auto-sensing 10/100/1000Mbps network ports



Size (WxHxD): 263 x 82 x 174 mm Wt: 1.08 kg

1490002010

ITSV-2 IP Touch Station with Video

- Video desktop intercom station supporting ICX-AlphaCom, SIP and IC-EDGE solutions
- 4-core 1.3GHz ARM Cortex A53 processor with 2GB RAM and 8GB eMMC Flash
- Runs on Android 7.0 operating system
- 5.0" (1280x720) capacitive 5-point touch screen HD TFT LCD
- Built-in Bluetooth for syncing with mobile devices and connecting Bluetooth headsets
- Integrated dualband WiFi (2.4GHz & 5GHz)
- Built-in PoE/PoE+ for power and network connection
- Built-in 1 megapixel CMOS tiltable camera for video calling with privacy wheel
- 6-way audio conferencing & 3-way 720p 30fps HD video conferencing capability
- Dual-mic HD speakerphone with noise reduction, echo cancellation & doubletalk performance
- Dual-switched auto-sensing 10/100/1000Mbps network ports



Size (WxHxD): 243 x 68.7 x 210 mm Wt: 1kg

1008400090 / 1008401090 / 1008401190

IPDM-V2_P / IPDMH-V2_P / IPDMHB-V2_P - IP Desk Master

- High-contrast display with backlight for excellent readability
 - Four dynamic navigation keys for quick access to system menus and directory entries.
 - Ten DAK keys provide single-touch access to stations, group calls, audio monitoring, public address zones, radio channels and telephone lines
 - Remote SW upgrade, configuration & monitoring
 - ONVIF Compatible
 - Superb audio quality – high bandwidth codec, active noise cancellation, high output power amp
- 1008400090 IPDM-V2_P: without Handset
 - 1008401090 IPDMH-V2_P: with Handset
 - 1008401190 IPDMHB-V2_P: with Handset (Black)



Size (WxHxD): 168 x 75 x 176mm Wt: 0.5kg

Size (WxHxD): 225 x 75 x 176mm Wt: 0.7kg

Accessories: 1008091100 Wall bracket for Desktop

1008007000

IP Dual Display Station

- IP station with full access to all features in the ICX-AlphaCom exchange
- Remote software upgrade, configuration and monitoring
- Powered from the IP network cable using Power over Ethernet (PoE)
- Superb audio quality – high bandwidth codec, acoustic echo cancellation and high output power amplifier
- Displays with backlight
- The station may use up to 90 Direct Access Keys (DAK) on 9 dynamic DAK pages. The dialing keys have letters to be used for search facility in the intercom directory and display text editing
- Background Noise Cancellation



Size (WxHxD): 72 x 140 x 270mm Wt: 0.4kg

Accessories: 1007007010 Microphone for Dual Display Station

1490000010

SDS-1 IP SIP Desk Station

- 2 lines, 2 SIP accounts, 3-way conferencing
- Integrated PoE
- Dual-switched 10/100 Mbps ports
- TLS and SRTP
- HD Audio
- EHS Support



Size (WxHxD): 184.5 x 209 x 76.2mm Wt: 0.73 kg

1008415000

IP-CROR IP Station for Cleanrooms and Operating Rooms

- Chemical resistant and anti-bacterial front surface for easy cleaning
- Robust aluminium front plate to withstand maintenance and cleaning conditions
- Large high contrast display with backlight for excellent readability
- 4 dynamic navigation keys plus 4 DAKs for quick access to system menus and directory entries.
- Audio technology providing loudspeaking handsfree duplex communication from any location in the room
- ONVIF Compatible
- Clean relay output contact for control of external equipment
- Designed to meet the requirements of ISO 14644-1, ISO Designation 5



Size (WxHxD): 125 x 280 x 30mm Wt: 0.63kg

Accessories: 1008098700 Flush Mount Back Box

1008041200

Vandal Resistant Substation TKIE

- Vandal and water resistant
- Designed in stainless steel (AISI 316L) to withstand corrosion
- Remote software upgrade, configuration and monitoring
- Integrated data switch with advanced networking and security functions
- 2 Relay outputs for remote control, e.g. doors, signal lamps and gates
- Powered from the IP network cable using Power over Ethernet (PoE)
- Superb audio quality – high bandwidth codec, active noise cancellation, acoustic echo cancellation and high output power amplifier



Size (WxHxD): 180 x 92 x 46 mm Wt: 0.8 kg

1008431000

CRM-V-2 IP Flush Master with Display

- Robust aluminium front plate
- Large high contrast display with backlight for excellent readability
- 4 dynamic navigation keys and 4 DAKs for quick access to system menus and directory entries.
- White light behind all keys for excellent readability in dark environments
- Integrated data switch with advanced networking and security functions
- ONVIF Compatible
- Superb audio quality – high bandwidth codec, active noise cancellation, acoustic echo cancellation and high output power amplifier
- Clean relay output contact for control of external equipment



Size (WxHxD): 125 x 280 x 30mm Wt: 0.63kg

Accessories: 1008097500 Gooseneck Microphone, 1008097100 Handset, 1008098700 Flush Mount Back Box, 2810020004/5/6 Desk Stand

1008010100

CRM-V-DAK48 IP DAK Expansion Module

- Extends CRM-V-2 IP Flush Master Station with 48 programmable DAK keys (direct access keys)
- Ideal for control room applications
- Visual indications with two LEDs (green/red) per DAK key
- All keys have backlight (adjustable)
- Easy labelling of keys
- Advanced call request handling with visual indications
- CCTV and intercom integration



Size (WxHxD): 125 x 280 x 30mm Wt: 0.65kg

Accessories: 1009648001 License for CRM-V-DAK48, 1008010101 Label paper for CRM-V-DAK48

1008097100

Handset for CRM-V-2

- Handset module for CRM-V-2 Flush Master



Size (WxHxD): 67 x 280 x 41mm Wt: 0.4kg

Related items: 1008431000 CRM-V-2

1008097500

Gooseneck Mic for CRM-V-2

- Noise cancelling gooseneck microphone for CRM-V-2 IP Flush Master
- Ideal for Public Address applications and control center



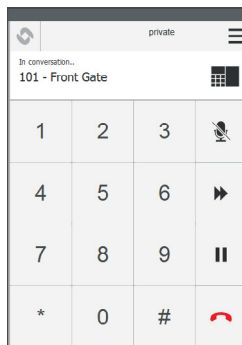
Size (WxHxD): 90 x 32 x 45 mm Wt: 0.1kg

Related items: 1008431000 CRM-V-2

1009661101

VS-Client Intercom Client for PC

- Designed to be used as a control room operator's intercom or office intercom.
- Intended users include: site security or control room operator, payment booth operator (parking and toll-roads), operator handling incoming calls, and in-office standard calls.
- Provides Turbine Class Audio with echo cancellation and noise reduction
- Full Numeric Keypad provides full call control with call transfer, hold/resume, mute.
- Call History shows a list of all incoming and outgoing calls.
- Address Book (Contacts)



Works with IC-EDGE only

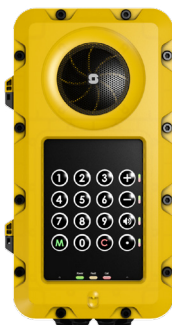
Turbine Industrial/ EX IP Stations



1008122010

TFIE-1

- IP intercom for industrial environments
- Dual Ethernet connectivity for redundant networks
- PoE powered
- Auxiliary DC power for redundancy
- Dual relay outputs
- Full Keypad + 6 configurable I/Os
- Dust- and water-protected to IP66 rating
- Accessories include Handheld PTT, Headset with ON/OFF and PTT and Handset with PTT
- Monitoring and self-diagnostics of critical functionality
- ONVIF Compatible
- Visible status indicators on front panel
- Background Noise Cancellation



Size (WxHxD): 178 x 345 x 101 mm Weight: 1.9 kg

Accessories: 1023533312 EMMAI-2H Mic, 1008140230 TA-23 Handset, AK5850HS Headset, 1008140225 TA-22B Cable & Plugbox, 1008140100 TA-10 Relay Module

1008122020

TFIE-2

- IP intercom for industrial environments
- Dual Ethernet connectivity for redundant networks
- PoE powered
- Auxiliary DC power for redundancy
- Dual relay outputs
- 6 configurable I/Os
- Dust- and water-protected to IP66 rating
- Accessories include Handheld PTT, Headset with ON/OFF and PTT and Handset with PTT
- Monitoring and self-diagnostics of critical functionality
- ONVIF Compatible
- Visible status indicators on front panel
- Background Noise Cancellation



Size (WxHxD): 178 x 345 x 101 mm Weight: 1.9 kg

Accessories: 1023533312 EMMAI-2H Mic, 1008140230 TA-23 Handset, AK5850HS Headset, 1008140225 TA-22B Cable & Plugbox, 1008140100 TA-10 Relay Module

1008122060

TFIE-6

- IP intercom for industrial environments
- Dual Ethernet connectivity for redundant networks
- PoE powered
- Auxiliary DC power for redundancy
- Dual relay outputs
- Full Keypad + 6 configurable I/Os
- Dust- and water-protected to IP66 rating
- Accessories include Handheld PTT, Headset with ON/OFF and PTT and Handset with PTT
- Monitoring and self-diagnostics of critical functionality
- ONVIF Compatible
- Visible status indicators on front panel
- PMOLED display with scrolling unit for calling to unlimited number of places



Size (WxHxD): 178 x 345 x 101 mm Weight: 1.9 kg

Accessories: 1023533312 EMMAI-2H Mic, 1008140230 TA-23 Handset, AK5850HS Headset, 1008140225 TA-22B Cable & Plugbox, 1008140100 TA-10 Relay Module

1008123110

TFIX-1-V2

- Ex IP intercom for potentially explosive atmospheres - Directive 2014/34/EU
- Ethernet compatible 2-wire interface
- Dust- and water-protected to IP66 rating
- Monitoring and self-diagnostics of critical functionality
- ONVIF Compatible
- Visible status indicators on front panel
- Background Noise Cancellation



Size (WxHxD): 178 x 345 x 101 mm Weight: 4 kg

Accessories: 1023533511 EMMAX-1H Mic, 1008150030 TAX-3 Handset, AK5850HS Headset, 1008150025 TAX-2B Cable & Plugbox

1008123120

TFIX-2-V2

- Ex IP intercom for potentially explosive atmospheres - Directive 2014/34/EU
- Ethernet compatible 2-wire interface
- Dust- and water-protected to IP66 rating
- Monitoring and self-diagnostics of critical functionality
- ONVIF Compatible
- Visible status indicators on front panel
- Background Noise Cancellation



Size (WxHxD): 178 x 345 x 101 mm Weight: 4 kg

Accessories: 1023533511 EMMAX-1H Mic, 1008150030 TAX-3 Handset, AK5850HS Headset, 1008150025 TAX-2B Cable & Plugbox

1008123130

TFIX-3-V2

- Ex IP intercom for potentially explosive atmospheres - Directive 2014/34/EU
- Ethernet compatible 2-wire interface
- Dust- and water-protected to IP66 rating
- Monitoring and self-diagnostics of critical functionality
- ONVIF Compatible
- Visible status indicators on front panel
- Background Noise Cancellation



Size (WxHxD): 178 x 345 x 101 mm Weight: 4 kg

Accessories: 1023533511 EMMAX-1H Mic, 1008150030 TAX-3 Handset, AK5850HS Headset, 1008150025 TAX-2B Cable & Plugbox

AK5850HS

AK5850HS Ex-Approved Headset

- Rugged headset for Ex application
- Noise-cancelling microphone
- High quality digital background noise reduction
- HD-voice compatible
- High quality audio
- Optional in-ear monitors may be connected for added damping in extreme environments
- IP Rating: IP66
- Standard 4-pole Nexus connector for easy connection/replacement
- For use with 1008150025 Ex-approved Cable for headset with PTT
- Designed for Turbine Ex explosion-proof intercoms



Size (WxHxD): 210 x 150 x 70 mm Weight: 400 g

Accessories: TA-22B / TAX-2B Ex-approved Cable and Plugbox

1008140230 / 1008150030

TA-23 / TAX-3 Handset with PTT

- PTT-key for operation in noisy environments
- Noise-cancelling microphone
- High quality digital background noise reduction
- HD-voice compatible
- IP Rating: IP66
- TA-23 for Turbine Industrial intercoms
- TAX-3 for Turbine Ex intercoms



Size (WxHxD): 200 x 70 x 50 mm Weight: 310 g

1023533312 / 1023533511

EMMAI-2H / EMMAX-1H Mic

- Handheld microphone PTT key
- Noise cancelling microphone
- High quality digital background noise reduction
- EMMAI-2H for Turbine Industrial intercoms
- EMMAX-1H for Turbine Ex intercoms



Size (WxHxD): 44 x 68 x 21.5 mm Weight: 0.22 kg

1008140225 / 1008150025

TA-22B / TAX-2b Cable and Plugbox for AK5850HS Headset

- Compact, rugged plugbox with PTT (10 m cable)
- For use with AK5850HS Headset
- TA-22B for Turbine Industrial intercoms
- TAX-2B for Turbine Ex intercoms



Length: 10 m

Heavy Duty IP Stations



1008472220

IPHDT-DY IP Heavy Duty Telephone, Door, Hotline

- Made for critical communication in rough environments like roads, tunnels, ships
- Water and dust resistant (IP66)
- Very durable with 5 mm aluminium casing and stainless steel components
- Magnetic reed hook-switch ensures minimal wear and tear
- Supports VoIP with SIP and CCoIP with ICX-AlphaCom
- Supports local power and Power over Ethernet (PoE)
- Integrated data switch with advanced networking and security functions
- ONVIF Compatible
- Supports HD Voice



Size (WxHxD): 205 x 320 x 148 mm Wt: 5.4 kg

Accessories: 1020600992 IRR-3 Relay Box 24V DC or 220V AC - Signal Unit WT - IP-66

1008472120

IPHDT-Y IP Heavy Duty Telephone, Hotline

- Made for critical communication in rough environments like roads, tunnels, ships
- Water and dust resistant (IP66)
- Very durable with 5 mm aluminium casing and stainless steel components
- Magnetic reed hook-switch ensures minimal wear and tear
- Supports VoIP with SIP and CCoIP with ICX-AlphaCom
- Supports local power and Power over Ethernet (PoE)
- Integrated data switch with advanced networking and security functions
- ONVIF Compatible
- Supports HD Voice



Size (WxHxD): 205 x 320 x 120 mm Wt: 5 kg

Accessories: 1020600992 IRR-3 Relay Box 24V DC or 220V AC - Signal Unit WT - IP-66

1008472100

IPHDT-KY IP Heavy Duty Telephone, Full Keypad

- Made for critical communication in rough environments like roads, tunnels, ships
- Water and dust resistant (IP66)
- Very durable with 5 mm aluminium casing and stainless steel components
- Magnetic reed hook-switch ensures minimal wear and tear
- Supports VoIP with SIP and CCoIP with ICX-AlphaCom
- Supports local power and Power over Ethernet (PoE)
- Integrated data switch with advanced networking and security functions
- ONVIF Compatible
- Supports HD Voice



Size (WxHxD): 205 x 320 x 120 mm Wt: 5 kg

Accessories: 1020600992 IRR-3 Relay Box 24V DC or 220V AC - Signal Unit WT - IP-66

1008472200

IPHDT-KDY IP Heavy Duty Telephone, Door, Full Keypad

- Made for critical communication in rough environments like roads, tunnels, ships
- Water and dust resistant (IP66)
- Very durable with 5 mm aluminium casing and stainless steel components
- Magnetic reed hook-switch ensures minimal wear and tear
- Supports VoIP with SIP and CCoIP with ICX-AlphaCom
- Supports local power and Power over Ethernet (PoE)
- Integrated data switch with advanced networking and security functions
- ONVIF Compatible
- Supports HD Voice



Size (WxHxD): 205 x 320 x 148 mm Wt: 5.4 kg

Accessories: 1020600992 IRR-3 Relay Box 24V DC or 220V AC - Signal Unit WT - IP-66

1008070010

IP Hotline Station

- Made for critical communication in roadside and tunnel environments
- Water and dust resistant
- Designed in flame and chip resistant plastic
- Superb audio quality
- Supports VoIP with SIP and CCoIP with ICX-AlphaCom
- Supports local power and PoE
- Advanced supervision functions



Size (WxHxD): 124 x 252 x 162 mm Wt: 1.0 kg

Station Kits

1008093000

IP Master Station Kit

- Made for Critical Communication over IP
- Supports full keyboard including direct access keys (DAK) and dynamic keys
- Supports handset and headset
- Superb audio quality
- OdB (600 Ohm) output to Public Address
- Relay output for e.g. door lock control and tamper alarm input
- Dual Ethernet ports for connection of other IP devices
- Remote software upgrade, configuration and monitoring



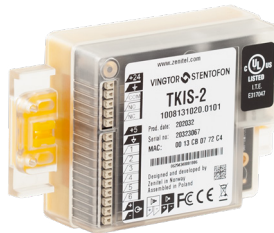
Size (WxHxD): 88 x 152 x 20mm Wt: 0.13kg

Accessories: 1008099000 Display for IP Master Station Board, 5 Pieces

1008131020

TKIS-2 VoIP Intercom Module

- DIN-rail mountable, clips included
- Add VoIP/CCoIP to your parking solution, cash point, vending machine, et al
- Build your own IP Intercom station or help point
- Make your own 10W IP Speaker
- Control relay and I/Os over IP
- Supports ICX-AlphaCom, IC-EDGE and SIP (for use with any IPBX)
- Supports a wide set of IP networking standards
- Remote software upgrade, configuration and monitoring
- ONVIF Compatible
- Powered from the IP network cable using Power over Ethernet (PoE)
- Advanced audio technology like automatic gain and volume adjustment, background noise cancellation, open duplex, etc.



Size (WxHxD): 117 x 71 x 32 mm Wt: 0.1kg

Accessories: 1008140170 TA-17 electret mic

1008132020

TKIE-2 Turbine IP Station Kit

- IP station kit with extended functionality
- Dual RJ45 for Ethernet connectivity (with switch)
- Dual relays (DPDT)
- 6 configurable I/Os (input, output or LED-driving)
- Line-in/Line-out connectivity for connection to audio devices
- Header for connecting audio accessories
- Connects to high-power relay module (TA-10)
- High-quality Turbine class output with 10W amplifier
- ONVIF Compatible
- Full open duplex and digital noise reduction
- Metal enclosure suitable for DIN-rail mounting



Size (WxHxD): 106 x 74 x 30 mm Wt: 0.1kg

Accessories: 1008140170 TA-17 electret mic

1008331010

TKIV+ Turbine Video & VoIP Intercom Module

- Build your own IP Intercom video station or Help-Point
- Add VoIP and video to your parking solution, cash point, vending machine, and the like
- Advanced audio technology like automatic gain and volume adjustment, background noise cancellation, open duplex, etc.
- HD Video at up to 30 FPS in 1440x1080p
- Wide angle lens
- ONVIF Conformant
- MJPEG and H.264
- Control relay and I/Os over IP
- Supports ICX-AlphaCom, IC-EDGE and SIP
- Supports a wide set of IP networking standards
- Remote SW upgrade, configuration & monitoring
- Powered from the IP network cable using Power over Ethernet (PoE and PoE+)



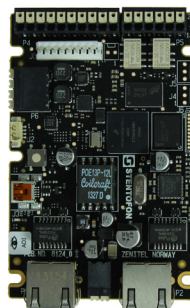
Size CPU Module (HxWxD): 89 x 108 x 31 mm

Size Camera Module (HxWxD): 53 x 66 x 23 mm

1008132010 / 1008132035

TKIE-1/TKIE-3-CC Turbine Kit

- IP station kit with extended functionality
- Dual RJ45 for Ethernet connectivity (with switch)
- Dual relays (DPDT)
- 6 configurable I/Os (input, output or LED-driving)
- Line-in/Line-out connectivity for connection to audio devices
- Header for connecting audio accessories
- Option to connect high-power relay module TA-10
- High-quality Turbine class output with 10W amplifier
- Full open duplex and digital noise reduction
- TKIE-3 comes with 5x5 keyscan matrix



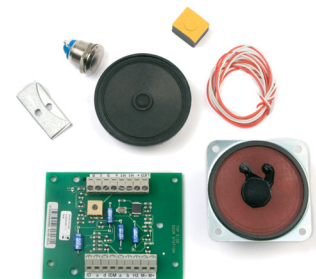
Size (WxHxD): 100 x 65 x 25 mm Wt: 0.1 kg

Accessories: 1008140100 TA-10 Relay Module

1007102000

Substation Kit (Analog)

- Complete kit for making a customized substation for AlphaCom
- Connects to an ASLT port
- Vandal resistant call button
- Superb audio quality (10 kHz)
- External or extra call button option
- Includes the 1307 substation board, 45 Ohm weather resistant loudspeaker, electret microphone with mounting material, one tamper-proof button and all other necessary station accessories



Size printcard (WxHxD): 90 x 25 x 71 mm Wt: 0.5 kg



IP Speakers with Microphones

1023300011

ELSIR-10CM IP Ceiling Speaker with Microphone

- Steel fire dome
- 10W Class D, built-in amplifier
- 96 dB SPL (1m)
- Built-in Microphone
- Ideal for Micro Zone PA and systems that require a limited number of speakers
- Each speaker is individually addressable and monitored
- Ideal for speakers installed in remote locations, e.g. roads and railways
- Remote software upgrade and configuration
- ONVIF Compatible
- Relay output for remote control, e.g. doors, signal lamps, gates
- Powered from the IP network cable using Power over Ethernet (PoE)
- Ideal for Building Security, Infrastructure and Industrial projects



Size (Diameter x Depth): 199 x 111 mm Wt: 1.4 kg

1023302330

ELSII-10WM IP Cabinet Speaker with Microphone

- 10W Class D, built-in amplifier
- Dust and water tight – IP66
- 95 dB SPL (1m)
- Built-in Microphone
- Ideal for Micro Zone PA and systems that require a limited number of speakers
- Each speaker is individually addressable and monitored
- Ideal for speakers installed in remote locations, e.g. roads and railways
- Remote software upgrade and configuration
- ONVIF Compatible
- Relay output for remote control, e.g. doors, signal lamps, gates
- Powered from the IP network cable using Power over Ethernet (PoE)
- Ideal for Building Security, Infrastructure and Industrial projects



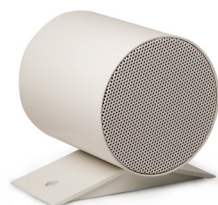
Size (WxHxD): 160 x 255 x 189 mm Wt: 2.1 kg

Related item: 1023303010 EMCG-1 Cable Gland Microphone

1023302340

ELSII-10PM IP Projector Speaker with Microphone

- 10W Class D, built-in amplifier
- Dust and water tight – IP65
- 97 dB SPL (1m)
- Built-in Microphone
- Ideal for Micro Zone PA and systems that require a limited number of speakers
- Each speaker is individually addressable and monitored
- Ideal for speakers installed in remote locations, e.g. roads and railways
- Remote software upgrade and configuration
- ONVIF Compatible
- Relay output for remote control, e.g. doors, signal lamps, gates
- Powered from the IP network cable using Power over Ethernet (PoE)
- Ideal for Building Security, Infrastructure and Industrial projects



Size (WxHxD): 176 x 201 x 160 mm Wt: 2.35 kg

Related item: 1023303010 EMCG-1 Cable Gland Microphone

1023301311

ELSII-10HM IP Horn Speaker with Microphone

- 10W Class D, built-in amplifier
- Dust and water tight – IP66
- 116 dB SPL (1m)
- Built-in Microphone
- Ideal for Micro Zone PA and systems that require a limited number of speakers
- Each speaker is individually addressable and monitored
- Ideal for speakers installed in remote locations, e.g. roads and railways
- Remote software upgrade and configuration
- ONVIF Compatible
- Relay output for remote control, e.g. doors, signal lamps, gates
- Powered from the IP network cable using Power over Ethernet (PoE)
- Ideal for Building Security, Infrastructure and Industrial projects



Size (WxHxD): 186 x 144 x 207 mm Wt: 1.8 kg

Related item: 1023303010 EMCG-1 Cable Gland Microphone

1023301321

ELSII-10LHM IP Long Horn Speaker with Microphone

- 10W Class D, built-in amplifier
- Dust and water tight – IP66
- 120 dB SPL (1m)
- Built-in Omni-directional Microphone
- Ideal for Micro Zone PA and systems that require a limited number of speakers
- Each speaker is individually addressable and monitored
- Ideal for speakers installed in remote locations, e.g. roads and railways
- Remote software upgrade and configuration
- ONVIF Compatible
- Relay output for remote control, e.g. doors, signal lamps, gates
- Powered from the IP network cable using Power over Ethernet (PoE)
- Ideal for Building Security, Infrastructure and Industrial projects



Size (WxHxD): 200 x 274 x 348 mm Wt: 1.9 kg

Related item: 1023303010 EMCG-1 Cable Gland Microphone

ASL Public Address and Voice Alarm solutions by Zenitel



Get your messages across in all situations and in all environments

This Public Address and Voice Alarm solution is designed and ready to meet the operational needs of your facility with its advanced audio performance capabilities.

- Operational Public Address, Security, and paging announcements helps keep everyone informed.
- Voice Alarm message direct people away from risks, and toward muster points
- First responders and emergency services can use Emergency microphones to issue instructions over the Public Address.
- Allows interactive Perimeter & Asset protection. Staff can trigger warning messages, or issue live instructions if an intruder has made an incursion.
- Integrated with a Video Management System, cameras and speakers can be positioned together around building and fence line to prevent unwanted activity.

1200300000

INTEGRA - Pre-built PAVA solution

- Self-contained Wall Mount Voice Alarm
- Integrated IP Audio Networking
- Simple installation
- Pre-installed with 3, 5, 7 or 10 amplifier cards
- Up to 2000W total load
- DC/IMPEDANCE loop loudspeaker monitoring
- EN 54-16 and EN 54-4 compliant



NEW

Size (WxHxD): 980 x 600 x 220 mm Wt: 40kg

Related Items: 1200100012 VIPEDIA 12 NET - Audio Router, 1200202000 V2000 - Amplifier Mainframe

1200100012

VIPEDIA 12 NET - Audio Router

- Professional audio quality
- 24 Bit 48kHz audio processing
- Built-in audio networking
- 12 analogue audio inputs & outputs
- 6 IP Audio inputs & outputs
- Onboard control inputs & outputs
- Fully EN54-16 certified
- Flexible control options



NEW

Size (WxHxD): 41,8 x 436 x 260 mm Wt: 3,75kg

1200202000

V2000 - Amplifier Mainframe

- Up to 2000W in 2U / 19" housing
- EN 54-16 and EN 54-4 compliant
- Houses up to 10 separate amplifier cards
- Hot swappable amplifiers cards
- Integrated battery charger
- Very high efficiency & low standby current
- Internal & external standby options



NEW

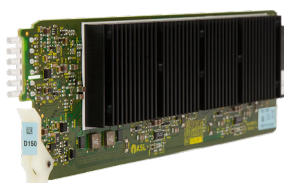
Size (WxHxD): 86 x 436 x 425 mm Wt: 7,7kg

Related Item: 1200202150 D150 - 150W Power Amplifier Module, 1200202500 D500 - 500W Power Amplifier Module, 1200540000 LSZDC - Power Amplifier Interface Module

1200202150

D150 - 150W Power Amplifier Module for the V2000

- EN 54-16 compliant
- Class D transformerless amplifiers
- 100V, 70V or 50V output
- Very high efficiency and low standby current
- Compatible with the V2000 mainframe and Integra range

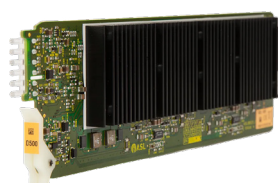


Weight: 0,8 kg

1200202500

D500 - 500W Power Amplifier Module for the V2000

- EN 54-16 compliant
- Class D transformerless amplifiers
- 100V, 70V or 50V output
- Very high efficiency and low standby current
- Compatible with the V2000 mainframe and Integra range

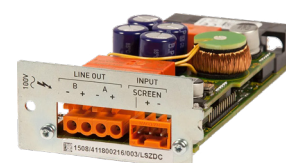


Weight: 0,8 kg

1200540000

LSZDC Power Amplifier Interface Module for the V2000

- EN 52-16 compliant amplifier interface card
- Powerful on-board DSP capability
- DC / impedance / loop monitoring (A to B)
- Independently monitored A / B line output fed from a single amplifier
- Automatic control of changeover to standby
- Compatible with the V2000 mainframe and Integra range



Size (WxHxD): 64 x 30 x 121 mm Wt: 0,7 kg

1200400010 / 1200400100 / 1200400200

EMS - Emergency Microphone Station

- EN 54-16 compliant indicators and controls
- 0, 10, 20 or 50 selection buttons
- Live, store +forward & recorded broadcasts
- Built-in loudspeaker with listen-in function
- Wall mount and fist microphone
- Voice over IP & analogue
- IP 65



Size (WxHxD): 402,4 x 344 x 95 mm Wt: 6 kg

1200410010 / 1200410100 / 1200410200

MPS - Multi Purpose Microphone

- EN 54-16 compliant indicators and controls
- 1, 10, 20, 30, 40, or 50 selection buttons
- Live, store +forward & recorded broadcasts
- Built-in loudspeaker with listen-in function
- Background music input and control
- Wall mount and fist microphone
- Voice over IP & analogue
- IP 65



Size (WxHxD): 58 x 175 x 200 mm Wt: 1 kg

ICX-AlphaCom Platform

1002000100

ICX-500 Intelligent Communication Gateway

- Made to provide critical communication in any environment
- Supports 552 IP stations
- Environmentally friendly and energy saving - max. 15 W
- Global networking and integration
- Dual software images for system robustness and low downtime during software upgrades
- Secure boot, hardware Root of Trust - RoT
- SD Card based software recovery
- Fully compatible with legacy AlphaCom system
- Large memory supports future feature expansion and new services
- Memory extension via SD card and USB
- High-quality professional PA broadcasting and messaging services
- Security voice guidance for public safety and building security
- Auto-attendant functionality (Automatic voice supported switchboard)
- Voice supported call guidance
- Slim and compact
- 1U rack integration
- Fanless design
- Robust, powder-painted, die-cast aluminium housing
- Vibration proof
- Closed ingress protected housing
- Flexible mounting system



Dimensions (WxHxD): 162 x 44.5 x 200 mm Wt: 1 kg

Software: ICX-AlphaCom Core

1002510000

IPS-AC1 PSU for ICX-500

- DIN-Rail mounting
- Ultra slim design with 35 mm (2SU width)
- Input 85-264 VAC, Output 48VDC
- No load power consumption <<0.3W
- Isolation class II
- Pass LPS (Limited Power Source)
- Protections: Short circuit / Overload / Over voltage
- Over voltage category III
- LED indicator for power on

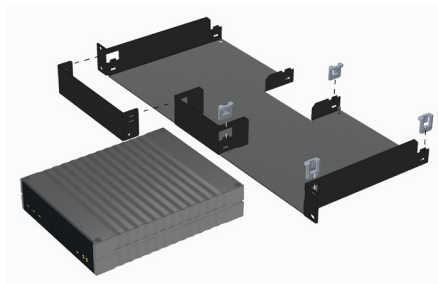


Dimensions (WxHxD): 35 x 90 x 55 mm Wt: 0.12 kg

1002500010

IA-RS1 Mounting Bracket for ICX-500

- Using the IA-RS1 Rack Shelf, two ICX-500 units can be mounted side by side in a 19" 1HU rack space.

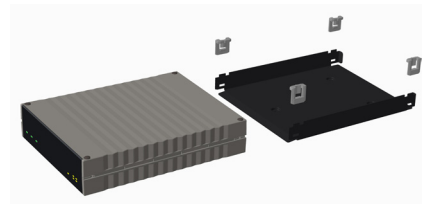


Dimensions (WxHxD): 483 x 44 x 203 mm Wt: 0.5 kg

1002500020

IA-MB1 Mounting Bracket for ICX-500

- The ICX-500 unit slides into the IA-MB1 Mounting Bracket in 4 possible orientations.
- To fix the bracket to a wall or shelf, use flat head washer screws with a maximum head height of 3 mm.



Dimensions (WxHxD): 202 x 169 x 28 mm Wt: 0.4 kg

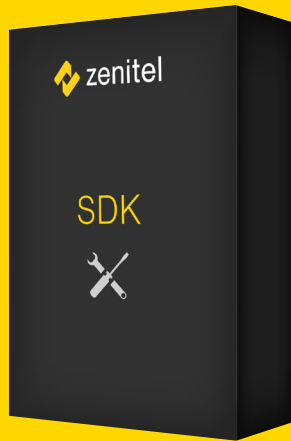
ICX-AlphaCom Licenses

These are the licenses for running ICX-AlphaCom Core on the ICX-500 Intelligent Communication Gateway. All licenses can be stacked.



1002600000	ICX-AlphaCom Core License	1002604200	ILF-M-EXT Enhanced Audio Message with Extended Storage - 1 server
1002600100	ILS-IC IP Station License	1002604500	ILF-HBA High bandwidth audio license
1002600200	ILS-CRM IP-station license, CRM	1002606006	ILR-U64 Redundancy License 64 Users
1002600300	ILS-SC IP-station license, softclient	1002606008	ILR-U256 Redundancy License 256 Users
1002600700	ILS-SIP SIP Station License	1002606009	ILR-U512 Redundancy License 512 Users
1002602101/1002602102/1002602103	ILI-SIP2/4/8 SIP Trunking, 2/4/8 Lines	1002606103	ILF-B8 Billing - 8 External Trunks / All Users
1002602001/1002602003	ILI-AN2/ILI-AN8 AlphaNet, 2/8 Lines		
1002602201/3/4/5	ILI-REC2/8/16/32 Active Recording Interface, 2/8/16/32 Users		
1002602306/1002602309	ILI-API64/ILI-API512 API for 64/512 Stations		
1002602400	ILI-IF Interface License, Enabling all interfaces except those on ports 61112/61113		
1002604000	ILF-M-BAS Basic Audio Messaging License		
1002604100	ILF-M-ENH Enhanced Audio Messaging License		

ICX-AlphaCom Application Software



AlphaPro

AlphaPro is the tool for configuring the ICX-AlphaCom system. It is self-contained, simple to install and easy to use. When a new server is to be configured, the server is given a working default factory setting.

The operator can then modify the settings such as:

- Directory (type of station, line interface, display name and more)
- Define groups (cell groups, guard groups)
- Interface to CCTV, PA, Paging, DECT
- AlphaNet
- Other custom behavior

There are currently over 100 defined features that can be programmed with AlphaPro. As AlphaPro is an off-line tool, it is possible to enter all parameters without being connected to the server. Once all parameters are entered, AlphaPro can be connected to the server and the parameters can be sent. AlphaPro can also upload configuration information from a server.

- AlphaPro connects to a server via the IP network or a local RS232 interface
- AlphaPro E7 runs without a hardware key. It gives access to all features except AlphaNet, but only for 36 subscribers.

AlphaPro Professional uses the Professional hardware key. It provides access to all features for all stations. This version must be used when extensive changes to the autoloader are required.

1009291120

AlphaPro Professional, USB dongle

1191101000

Vingtor-Stentofon Operator Basic License

1191101010

Vingtor-Stentofon Operator Enhanced License

Vingtor-Stentofon Operator

Vingtor-Stentofon Operator is a PC-based system management application package for the ICX-AlphaCom platform. It shows the status of intercom devices by way of maps and makes it easy for operators to:

- View calls and call requests
- Act easily and quickly on events and requests
- Store an on-screen history of events through a Journal

The application is primarily intended for use in a control room environment. It provides a clear overview for operators with multiple layout possibilities according to the operator's preference. Layouts can be defined to cover single or multiple screens and can be added, edited and deleted by administrators.

Software Development Kit

The Software Development Kit (SDK) makes it easy for 3rd-party developers to make value-added applications for integration with the ICX-AlphaCom system. The SDK is based on Microsoft .NET technology. This gives the 3rd-party developer access to a wide set of software components as well as an extensive Microsoft .NET development environment and tool set. Some examples of applications that can be made using the SDK:

- Integrated control room panel on a touch-screen for public address, radio and intercom

- Interactive intercom icons on a map with ability to call, broadcast public address, and listen in
- Integration with video analytics to provide voice response if someone is trespassing
- Integration with CCTV, where a camera is switched on with Voice Activity Detection
- PC-based Call Handler with graphical user interface for control rooms and guards

The SDK consists of a number of assemblies (DLLs) that can be easily integrated with software written in C#.

To further support 3rd-party developers, help files, a quick start manual, Wiki pages and example applications including source code are available to get you quickly up to speed with writing value-added applications for the ICX-AlphaCom system.

To get access to the SDK, please visit: www.zenitel.com/sdk-alpha.com

OPC

OPC provided easy and fast integration based on standard OPC technology. The OPC license is installed on the ICX-AlphaCom platform.

The ICX-AlphaCom OPC Server implements the following OPC standards:

- OPC Data Access (OPC DA V2/V3)
- OPC Alarm & Events (OPC AE V1.1)
- OPC Unified Architecture (OPC UA)

Audio Messaging

With Audio Messaging you can store and play audio messages directly from your PC or intercom station, and the messages are safely stored in the flash memory of the ICX-AlphaCom system. Audio Messaging supports a wide set of applications including auto-attendant, PA broadcasting, voice response and voice driven menus. It is easy to initiate audio messages from 3rd party systems using OPC, SDK or Data Protocol. Make live PA and group call broadcasts with recall for handling feedback and verifying messages. Schedule PA and group broadcasts for specific events and set up an auto-attendant with voice guided menus for handling incoming calls. You can also set up a voice response for call request waiting messages and absence messages. The feature set of the license is compatible with that of the ASVP card, but offers some additional functions.

VS Recorder

- ICX-AlphaCom Call Recording
- Audio and Video Stream Recording

The VS Recorder software is a fully-featured IP based audio recorder with additional support for video recording. The solution is able to record calls from all types of terminals connected to ICX-AlphaCom: analog and IP intercoms, analog and IP phones. The Recorder is also a NAVR – Network Audio/Video Recorder.

1190110100

VS Recorder – Base Module

1190110110

VS Recorder – Playback/Configuration Client

1190110120

VS Recorder – AlphaCom Recording Module

1190110121

VS Recorder – AlphaCom Recording Module, AddOn

1190110131

VS Recorder – Stream Recording Module, 1 stream

1190110138

VS Recorder – Stream Recording Module, 8 streams

1190110160

VS Recorder – API

1190110180

VS Recorder – Secure Audio Export

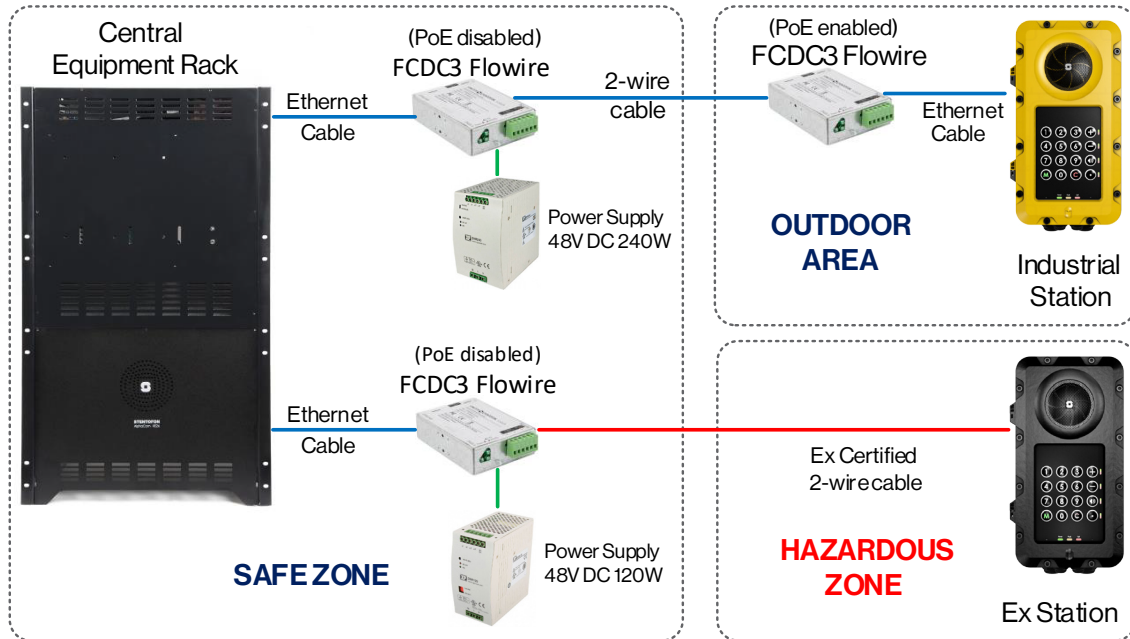
Flowire Converter

The Flowire Converter enables Ethernet to run on the same 2 wires as power, enabling simpler cabling and opens up for longer cable hauls.

Connection to Central Equipment Rack for Outdoor and Ex Intercom Stations

The intercom stations can use the 2-wire Flowire system for connection. Flowire is used to extend the Ethernet connection and support power distribution on the 2-wire cabling infrastructure.

The Ex station located in the hazardous zone is connected to the central equipment rack located in the safe zone using a 2-wire cable.



1008080310 FCDC3 Flowire Ethernet Converter

- One single pair of cable can be used to distribute power and data
- The cable hauls can be longer, up to 2 km, reducing the need for switches and/or repeaters
- Up to 10 Flowire devices can be connected to the same 2-wire cluster star topology
- Existing infrastructure can be used, even though only a single pair is available. This reduces the total cost of retrofit projects
- The Flowire converter can be used with any Ethernet enabled device (not limited to Zenitel products)
- Enable/Disable PoE switch
- Ingress Protection Rating: IP-20
- **Important:** 24-48V DC non-PoE Ex equipment



Size (WxHxD): 112 x 74 x 26 mm Weight: 0.3 kg

2990101120 XP Power Supply, 48V DC 120W

- Up to 90% Efficiency
- Wide Adjustment Range
- Parallel Function
- DC Standby Versions
- Full Power from -40 °C to +60 °C
- Convection-cooled with 25 mm free space all sides
- EN60950-1 UL508 UL60950-1:cUL60950-1 Pollution Degree 2,
- CE Mark, UL60950-1 Overvoltage Category II, UL508 Overvoltage Category III



Size (WxHxD): 63,5 x 125 x 116 mm, Weight: 920 g

2990101240 XP Power Supply, 48V DC 240W

- Up to 90% Efficiency
- Wide Adjustment Range
- Parallel Function
- DC Standby Versions
- Full Power from -40 °C to +60 °C
- Convection-cooled with 25 mm free space all sides
- EN60950-1 UL508 UL60950-1:cUL60950-1 Pollution Degree 2,
- CE Mark, UL60950-1 Overvoltage Category II, UL508 Overvoltage Category III



Size (WxHxD): 83 x 125 x 111,3 mm, Weight: 1360 g

Licenses

IC-EDGE Licenses



1009661001 1 x IC-EDGE Station License	1009661201 1 x IC-EDGE SIP-Client Extensions
1009661006 6 x IC-EDGE Station License	1009661206 6 x IC-EDGE SIP-Client Extensions
1009666000 1 x IE-MOBL Mobile App	1009662001 IC-EDGE TelTrunk

AlphaCom XE Licenses

IP stations require a license. They do not require additional hardware such as an ASLT card. The maximum number of stations that is supported by AlphaCom XE Audio Servers is 552.

1009641001 IP station license for 1 station	1009648011 STENTOFON SoftClient - 1 license
1009641006 IP station license for 6 stations	1009648012 STENTOFON SoftClient - 6 licenses
1009641012 IP station license for 12 stations	1009648013 STENTOFON SoftClient - 12 licenses
1009641036 IP station license for 36 stations	1009648014 STENTOFON SoftClient - 36 licenses
1009641138 IP station license for 138 stations	1009648015 STENTOFON SoftClient - 138 licenses
1009648001 License for CRM-V DAK expansion	

AlphaNet and multi-module linking for the AlphaCom XE Audio Servers can be via data networks. This does not require additional hardware inside the server, but opening up the capability requires the correct license. Licenses are required in all connected modules and nodes. There is no difference whether a license is used for an AlphaNet or a multi-module connection. A static license means that the destination of an audio link needs to be defined at commissioning, a dynamic link is a common resource, and can be used for any audio link that requires connection. The data links between modules and nodes are not licensed.

1009640002 AlphaNet and Multi-Module VoIP License for 2 Static Lines
1009640008 AlphaNet and Multi-Module VoIP License for 8 Dynamic Lines
1009640016 AlphaNet and Multi-Module VoIP License for 16 Dynamic Lines
1009640030 AlphaNet and Multi-Module VoIP License for 30 Dynamic Lines
1009640108 AlphaNet and Multi-Module VoIP License for 8 Dynamic Lines, upgrade from 2 lines

The multi-module license gives the possibility to expand the size of an Audio Server. It is possible to add up to 4 modules in a multi-module Audio Server. The modules will be linked together over a local area IP network (LAN). 30 VoIP channels are available in each server module. Note that the license is only required in the master module in the multi- module server.

1009640202 Multi-Module VoIP license - 2 Modules
1009640203 Multi-Module VoIP license - 3 Modules
1009640204 Multi-Module VoIP license - 4 Modules
1009640211 Multi-Module VoIP license, upgrade + 1 module

SIP Trunking gives the possibility to connect an AlphaCom XE to a telephone network, either directly to a SIP enabled telephone system or through a gateway to an analog or ISDN (BRI or PRI) system.

1009642001 SIP Trunking, 1 line	1009642104 SIP Trunking, 4 lines - upgrade from 2 lines
1009642002 SIP Trunking, 2 lines	1009642008 SIP Trunking, 8 lines
1009642004 SIP Trunking, 4 lines	1009642016 SIP Trunking, 16 lines

Each **SIP** telephone requires a SIP station license. SIP telephones can be physical units but also SIP softphone clients on a PC or PDA.

1009643001	SIP station license for 1 SIP telephone
1009643012	SIP station license for 12 SIP telephones

1009643006	SIP station license for 6 SIP telephones
1009643036	SIP station license for 36 SIP telephones

AlphaCom Mode Licenses for Exigo Amplifiers

Each amplifier channel consumes one license, but two channels can be combined into one on an amplifier to save on licensing.

1009641701	License for 1 Exigo Amplifier Channel
1009641702	License for 2 Exigo Amplifier Channels
1009641703	License for 3 Exigo Amplifier Channels

1009641706	License for 6 Exigo Amplifier Channels
1009641712	License for 12 Exigo Amplifier Channels
1009648510	High Bandwidth Audio License

OPC Interface Licenses

1009649901	OPC interface supporting 40 stations
1009649902	OPC interface supporting 80 stations
1009649903	OPC interface supporting 160 stations
1009649904	OPC interface supporting 240 stations

1009649905	OPC interface supporting 320 stations
1009649906	OPC interface supporting 400 stations
1009649907	OPC interface supporting 552 stations

Audio Messaging Licenses

1009648500	Basic Audio Messaging License
	License requires AMC IP v11 hardware. Includes Delayed PA broadcast using recall to prevent feedback problems, 1 auto-attendant message, 2MB memory storage for audio messages.
1009648501	Enhanced Audio Messaging License
	License requires AMC IP v11 hardware. Includes Delayed PA broadcast using recall to prevent feedback problems, 3 auto-attendant messages, 10MB memory storage for audio messages, Full ASVP functionality.

1009648502	PA Recall License
	License can be installed on both AMC IP v10 and v11 hardware. Includes Delayed PA broadcast using recall to prevent feedback problems.

Active Recording Interface Licenses

1009648092	Active recording interface - 2 users
1009648093	Active recording interface - 6 users
1009648094	Active recording interface - 12 users
1009648095	Active recording interface - 36 users

1009648096	Active recording interface - 72 users
1009648097	Active recording interface - 138 users
1009648098	Active recording interface - 276 users
1009648099	Active recording interface - 552 users

Billing Licenses

1009647902	Billing - 2 external trunks / 400 users
1009647904	Billing - 4 external trunks / 400 users
1009647908	Billing - 8 external trunks / 400 users

1009647916	Billing - 16 external trunks / 400 users
1009647932	Billing - 32 external trunks / 400 users



Hear, be heard, and be understood

– every time and everywhere